

StereoStitch Linear

We support your productivity-enhancement initiatives

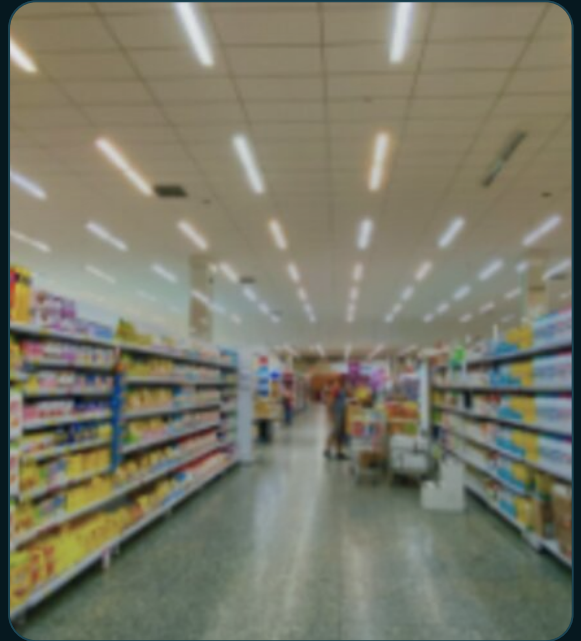
StereoStitch Linear is similar to a paper scanner...

... it scans the real world into 3D and transposes any relatively flat surface into exploitable data, pictures, or videos.

Linear stitching combines images produced in a linear manner, where the user needs to scan objects larger than the field of view of a single camera.

Either the camera or the object can be moved in a single direction to scan the object, combining successive images into one large image to be processed later by other modules.

StereoStitch's proprietary technology is highly efficient, delivering **extremely high resolution** at **minimal required computation power**.



Where & how should you use StereoStitch Linear?



Applications

- Shelf scanning for stock management using robots or drones
- Under-vehicle scanning
- Land delimitations and distant views via drones and satellites
- Inspection of pipelines, railways, electrical / high-tension networks, sewers...



Sectors / Industries

- FMCG, bookstores, warehouses
- Security
- Imaging
- Utilities, Transportation

StereoStitch Linear uniqueness

✓ Fast & optimized

✓ High resolution

✓ GPU-based processing

✓ Parallax compensation

✓ Embedded / low-consumption ready

✓ Colour correction